

# SERIES 100 ROOF MOUNT SYSTEM

SnapNrack Residential PV Mounting Systems

The SnapNrack line of solar mounting systems is designed to reduce total installation costs. The system features technical innovations proven on more than 100MW of solar projects to simplify installation and reduce costs.

## Pitched Roof Arrays Simplified

The SnapNrack Series 100 Roof Mount System is an efficient, visually appealing, photovoltaic (PV) module installation system. Series 100 was developed in the field by a team of veteran solar engineers and installers. Their goal was to ensure a quick, efficient installation. Series 100 has been tested on megawatts of real-world residential and commercial installations. Industry leading installation times are achieved with unique Snap-in fasteners and fully adjustable components that make installation of roof mounted solar arrays easy while achieving lower installation costs.

- Up to 3" of height adjustability at roof connection
- Waterproof full-metal flashing at each roof penetration
- Works on virtually all composition and tile roofs
- Single wrench size for all system hardware
- Configures easily as low profile or tilt (0-60 Degrees)
- Rail channels provide excellent wire management

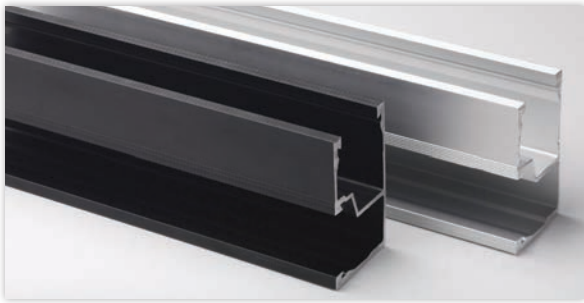


## Roof System in 4 Simple Steps:

- 1) Identify Site Conditions (Array Tilt, Building Height, Roof Type, Wind and Snow Loads)
- 2) Determine Footing Span from Engineering Tables (download at [www.snapnrack.com](http://www.snapnrack.com))
- 3) Choose color (Clear or Black) and roof attachment type
- 4) Place Order with your distributor. Purchase material for a single project or order in bulk for additional savings
  - Rail & Module Clamps
  - Roof Attachments
  - Array Accessories

Patent Pending

**SnapNrack™**  
PV Mounting Systems



### Simple

- Quick assembly and clean aesthetic finish
- One wrench fits every bolt in the system
- Low profile installation on any roof

### Adaptable

- Compatible with virtually all 60 and 72 cell modules
- Unique “snap-in” channel nuts can be installed anywhere on the rail
- Rail channels provide improved wire management

### Strong

- Excellent seismic, wind, and snow-loading protection
- Vertical and horizontal adjustments ensure superior fit
- Rain-tight metal flashing ensures waterproofing

### Innovative Universal End Clamps

- One size fits any standard L frame module
- Clean look - nothing extends beyond module frames
- Less waste - rail lengths match most modules

## SnapNrack Series 100 Technical Data Patent Pending

Materials	<ul style="list-style-type: none"> <li>• 6000 Series aluminum</li> <li>• Stainless steel</li> <li>• Galvanized steel</li> </ul>
Material Finish	<ul style="list-style-type: none"> <li>• Clear and black anodized aluminum</li> </ul>
Installation	<ul style="list-style-type: none"> <li>• Quick and efficient mounting</li> <li>• Adjustable hardware to ensure clean and level finish</li> <li>• Worry-free waterproof flashing</li> </ul>
Calcs. & Certifications	<ul style="list-style-type: none"> <li>• Wind speeds up to 150 MPH and snow loads to 120 PSF</li> </ul>
Grounding	<ul style="list-style-type: none"> <li>• Washer, Electrical Equipment Bond (WEEB) or lay-In lugs</li> </ul>
Warranty	<ul style="list-style-type: none"> <li>• 10 Year material and workmanship (download full details at <a href="http://snapnrack.com">snapnrack.com</a>)</li> </ul>

**SnapNrack™**  
**PV Mounting Systems**

(877) 732-2860      [www.SnapNrack.com](http://www.SnapNrack.com)

Printed on recycled paper using soy based inks.

© 2012 by SnapNrack PV Mounting System. All rights reserved.