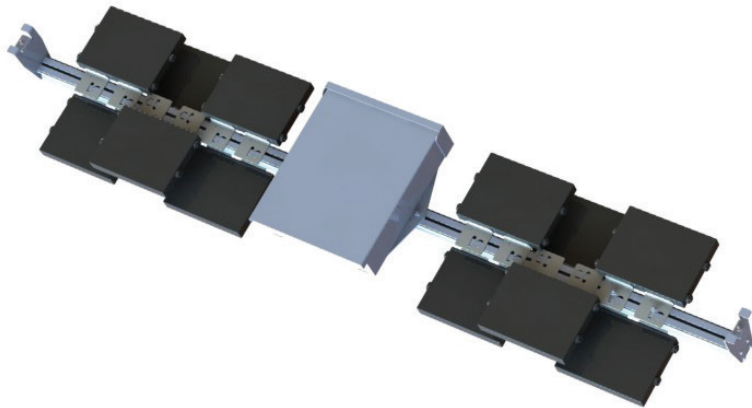


RAIS[®] Inverter Bus

ten K
S O L A R[™]

tenKsolar's RAIS Inverter Bus represents a fundamental breakthrough in solar energy inversion – by combining the operation of multiple low voltage inverter modules, it optimizes the conversion of DC energy from RAIS PV modules to AC energy. tenKsolar load sharing technology ensures that the energy is converted at the highest possible efficiency, and helps to distribute the workload among the inverter modules, lowering the duty cycle by half, extending the longevity of the inverter system. Shipped as a pre-wired assembly, it fully integrates into the RAIS PV system without the need for an additional foundation or dedicated installation area, reducing install times and costs. As an integrated element of the RAIS PV system, it delivers AC energy at the array for the lowest balance of system costs in solar PV today.



- » **Intelligent Load Sharing Among Inverters**
Maximizes inversion efficiency
- » **Intrinsic Wear Leveling**
Extends service life of the inverter system
- » **Shipped as a Pre-Wired Assembly**
Lowers install times and costs
- » **Fault Tolerant Configuration**
Eliminates any single point of failure
- » **Environmentally Hardened Inversion Shells**
Maximizes lifetime / reliability
- » **Inverter Module Platform**
Maximum flexibility among inverter suppliers
- » **Compatible to any Service Requirement**
Simple design process and deployment
- » **AC at the Array**
Early conversion to AC simplifies balance of system requirements, lowering costs
- » **Available AC Disconnect with Integrated Extensions**
Speeds Installation

RAIS Inverter Bus

Technical Specifications				
	RAIS Inverter Bus	RAIS Inverter Bus	RAIS Dual Inverter Bus	RAIS - 3 Phase Power Block
Model Number	RAIS-INVB-3500-208-60 RAIS-INVB-3500-240-60	RAIS-INVB-6000-208-60 RAIS-INVB-6000-240-60	RAIS-INVB-12000-208-60 RAIS-INVB-12000-240-60	RAIS-INVB-36000-480-60
Nominal Output Power	3500W	6000W	12000W	36000W
Voltage Range	208 / 240	208 / 240	208 / 240	277-480 3 Phase
DC Input				
Max System Voltage	57V	57V	57V	57V
Number of RAIS XT Modules	7-11	12-20	24-40	48-80
Incoming Power Min-Max	2871-4510W	4920-8200W	9840-16400W	29520-49200W
Number of DC Connections	2	2	4	12
AC Output				
Grid Connection Type	Single Phase	Single Phase	Single Phase	Three Phase / 3Wire
Frequency	60hz	60hz	60hz	60hz
AC Wire Connection Points	1	1	2	4
Reliability				
Redundancy	6	6	6	6
25 Year Annual Inversion Capacity w/o Maintenance	93%	93%	93%	93%
Included Functions				
DC Combiner / Disconnect	Included	Included	Included	Included
AC Fused Disconnect	1	1	1	3
Monitoring Option				
Logger	Egauge	Egauge	Egauge	Egauge
Annual Monitoring Fee	None	None	None	None
Environmental				
Operating Temperature Range Ambient	-40° to 149°F -40° to 65°C	-40° to 149°F -40° to 65°C	-40° to 149°F -40° to 65°C	-40° to 149°F -40° to 65°C
Storage Temperature Range	-40° to 185°F -40° to 85°C	-40° to 185°F -40° to 85°C	-40° to 185°F -40° to 85°C	-40° to 185°F -40° to 85°C
Relative Humidity	0-100% RH	0-100% RH	0-100% RH	0-100% RH
Weight	52 lbs (21kg)	90 lbs (41kg)	180 lbs (82kg)	540 lbs (245kg)
Mounting System	Included	Included	Included	Included
Warranty	25 Years	25 Years	25 Years	25 Years

Inverter Bars Shipping Information		
Max Quantity/Pallet	Pallet Dimensions	Fully Loaded Pallet Weight
12	85" x 55" x 42" (216 x 140 x 107 cm)	960 lbs (435kg)
Compliance		
Emissions & Immunity (EMC) Compliance	Safety Class Compliance	Grid Connection Compliance
FCC PART 15, ANSI C63.4 2003, ICES-003	UL 1741, CSA C22.2, No. 107.1-01	IEEE 1547